

QUASER

we cut faster

MV204C series

MV205C series



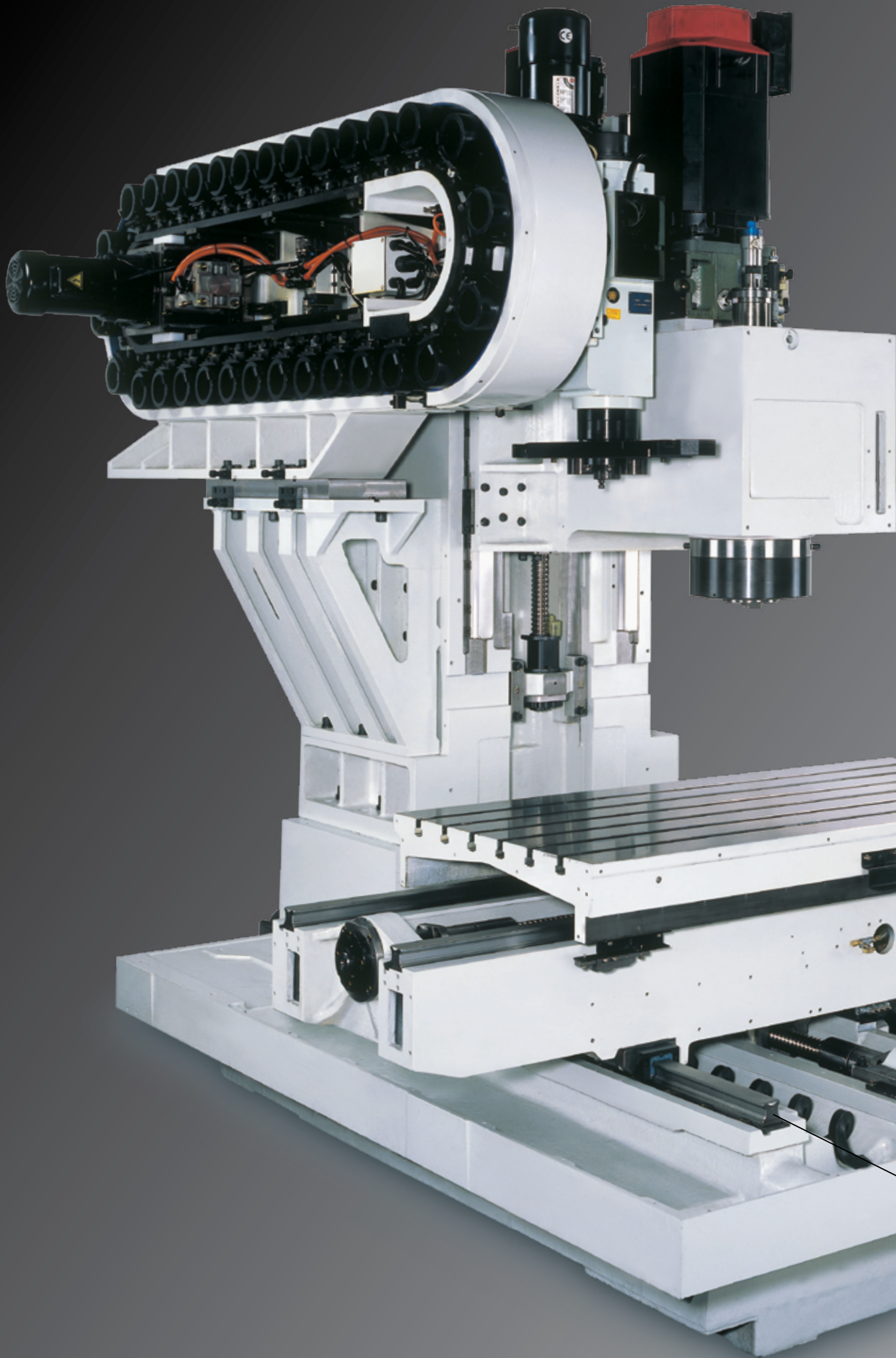
With . . .

**X & Y travels increase
from 1,000 x 600 mm to
1,200 x 700 mm while the
floor space requirements
are the same.**



MV204C
The evolution model of MV204II
(777 units built from 1999 to 2005)





Very rigid cast iron frame:

- 1,000 mm Y-spacing
- Anti-deformation (bending & torsion) saddle
- Cross ribs column
- The ATC unit is mounted directly on the machine base





ZF two speeds gear box for NO.50 taper mega torque spindle

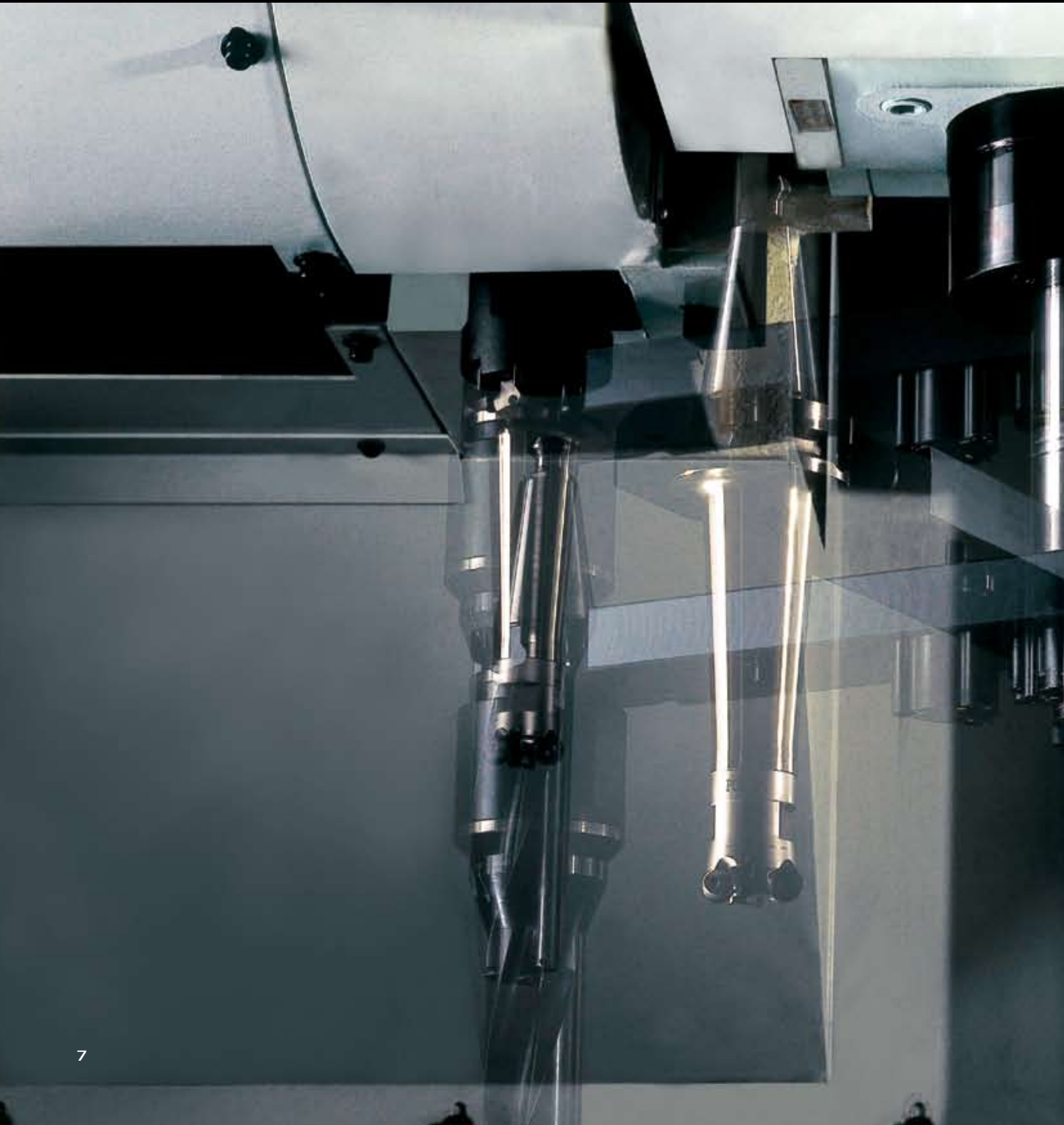


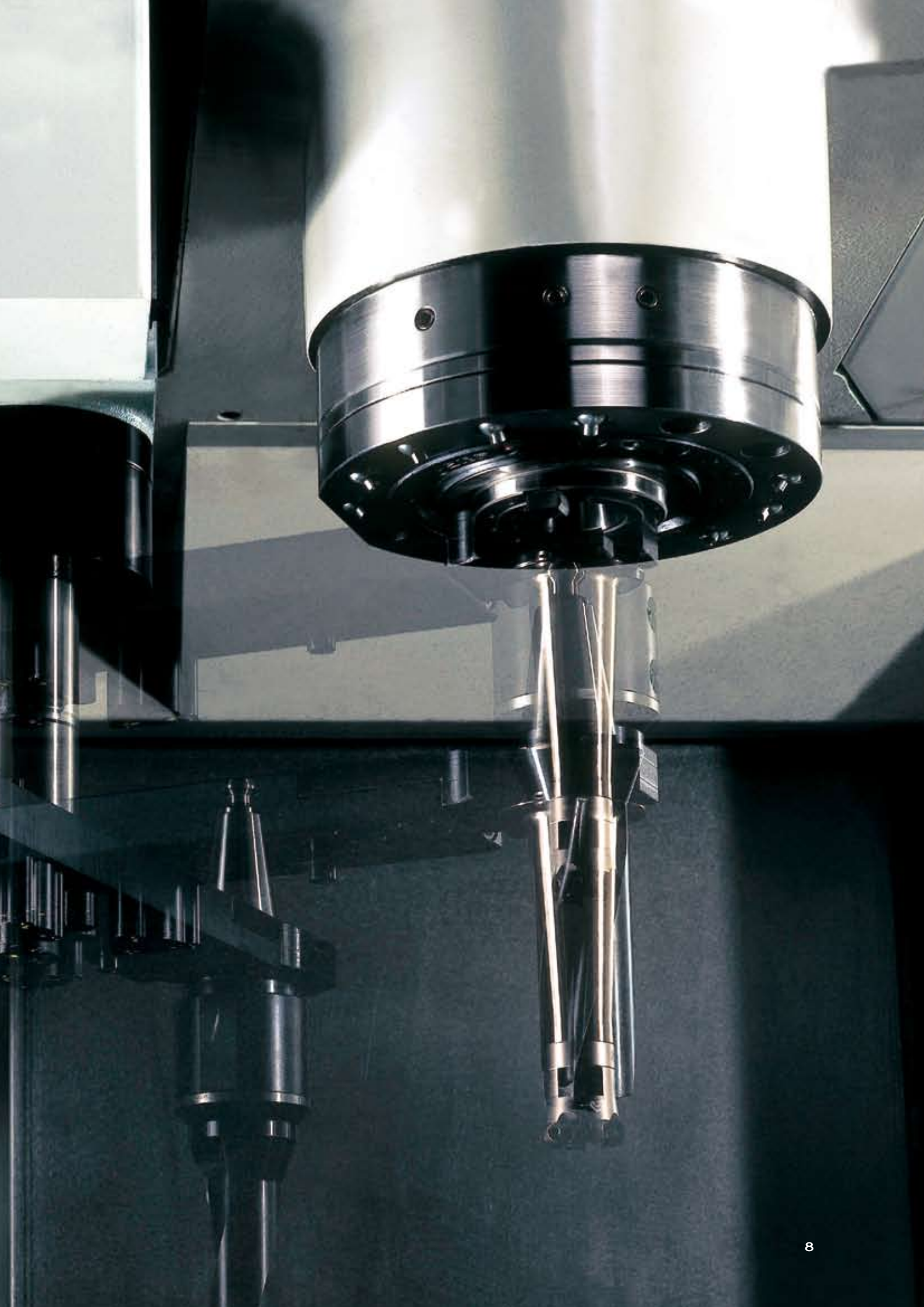


Various SKF made spindle systems to meet your requirements; from very affordable NO.40 taper 22 kW, 12,000 min⁻¹ belt spindle to NO.50 taper mega torque (955 Nm) for detail, ref QUASER Spindle Technology 2006



**Fast & reliable ATC
with magazine capacity
up to 60 position**







Ergonomics . . .

- Operator oriented panel
- View cutting through 3 sides



Well organized chip management

Including the following standards

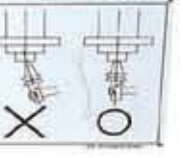
- 2 chip augers to the front, large 4 openings & chip conveyers
- 4 bar nozzle coolants, 4 bar auto flushing on stainless base slopes & 20 bar T.S.C.
- 600 L tank



Keep hands clear of tool
changer.
Tool changer rotates
automatically.
Can cause severe injury.
Turn off and lock out power
at electrical panel before
servicing.

Keep hands, clothing and body
clear of all tool / spindle rotation.
Machine starts and moves
automatically.

SAFETY INSTRUCTION
Before working near spindle:
- Release all belts by magazine.
- Set in manual mode, stop spindle.
- Keep "Do not touch" sign on
operator's panel.
- Wear safety helmet.





Easy loading of
large workpiece



MV204 CP

150mm



FANUC 18iMB

Models		
Value	Performance	50 Taper
MV204CV / 9	MV204CP / 9	MV205CP / 6
MV204CV / 12	MV204CP / 12	MV205CP / 7.5
	MV204CP / 15	MV205CP / 10
	MV204CP / 15D	
	MV204CPL / 9	MV205CPL / 6
	MV204CPL / 12	MV205CPL / 7.5
	MV204CPL / 15	MV205CPL / 10
	MV204CPL / 15D	

Technical Data		MV204CV		MV204CP / MV204CPL				MV205CP / MV205CPL		
		Value		Performance				50 Taper		
		/9	/12	/9	/12	/15	/15D	/6	/7.5	/10
Work range										
Table size (mm)		1,400 x 700		1,400 x 700 / 1,700 x 700						
Travel	X (mm)	1,200		1,200 / 1,500						
	Y (mm)			700						
	Z (mm)			610						
Spindle nose to table surface (mm)		150 ~ 760		150 ~ 760				190 ~ 800		
Table load capacity (kg)		1,000		1,800 / 2,000						
Feed drive										
Feed force	X (N)	6,283		11,519						
	Y (N)	6,283		11,519						
	Z (N)	11,519		11,519						
Rapid movement	X / Y / Z (mm/min.)			36						
Acceleration	X / Y / Z (m/s ²)	4 / 3 / 5		5 / 5 / 4 4 / 4 / 4						
Dia. & pitch of the ball screw				Ø45 / P = 12 / 12 / 12						
Position accuracy				0.015 / 0.008 (Linear encoder) – ISO 230-2						
In X / Y / Z (mm)				0.008 / 0.004 (Linear encoder) – JIS						
Main spindle										
Spindle model				40 Taper				50 Taper		
Spindle taper				ISO 40 or BBT 40				ISO 50 or BBT 50		
Max. spindle speed		9,000	12,000	9,000	12,000	15,000		6,000	7,500	10,000
Spindle base speed		1,125	1,500	1,125	1,500	1,400	600	300	375	500
Spindle output kW (S6-40%)		22 ⁽¹⁾		30	30	22	30	30	30	30
Spindle output torque Nm (S6-40%)		187 ⁽¹⁾	140 ⁽¹⁾	255	191	150	350	955	764	573
Spindle transmission		Belt		Belt		Coupling		Gear box		
Spindle diameter (mm)				Ø70				Ø100		
Tool changer										
Tool selection				Random						
Magazine positions	STD	24		24 / 32				30		
	OPT	-		32 / 48 / 60				-		
Max. tool diameter (mm)		80		80 (75 mm in 32 / 48 / 60 magazine)				125		
<w/o adjacent tool (mm)				125				200		
Max. tool length (mm)				300				350		
Max. tool weight (kg)				7				15		
CTC time – ISO 10791-9 (sec.)		6		5.5				9		

Note: ⁽¹⁾ S6-25%

Main spindle (SKF made)

40 Taper	Belt spindle	- 9,000 min ⁻¹ - 12,000 min ⁻¹
	Coupling spindle	- 15,000 min ⁻¹
50 Taper	Gear box	- 6,000 min ⁻¹ - 7,500 min ⁻¹ - 10,000 min ⁻¹

Control

FANUC	18iM-B
Black	● ○ × = Both on MV204C & MV204CL
Blue	● ○ × = MV204C & MV205C
Red	● ○ × = MV204CL & MV205CL

● = Standard ○ = Option × = N / A

Technical Data	MV204CV Value		MV204CP / MV204CPL Performance				MV205CP / MV205CPL 50 Taper		
	/9	/12	/9	/12	/15	/15D	/6	/7.5	/10
Coolant system	600								
Coolant tank capacity (Liter)									
Pump capacity									
- Nozzle coolant	60 L / min, 4 bar								
- Through spindle coolant	25 L / min, 20 bar								
- Wash down	60 L / min, 4 bar								
Machine size	2,880		2,880		2,880		3,300		
Height (mm)			3,030		3,030		3,370		
Floor space W x D (mm) 24 / 32 ATC	2,900 x 2,635		3,675 x 2,635		4,475 x 2,635				
48 / 30 ATC			3,675 x 2,952		4,475 x 2,952		3,675 x 3,250 / 4,475 x 3,250		
Weight (kg)	8,500		8,500 - 9,100		9,500 - 10,100		9,000 - 9,600 / 10,000 - 10,600		
Connections									
Main power	220 V / 60 Hz or 400 V / 50 Hz								
Power consumption (KVA)	25		35		35		45		40

Standard / Option Accessories :

	MV204CV		MV204CP / MV204CPL				MV205CP / MV205CPL		
	/9	/12	/9	/12	/15	/15D	/6	/7.5	/10
■ FANUC 18i MB	●	●	●	●	●	●	●	●	●
■ FANUC 3 "O" package (RISC, Data servo, AI nano HPCC)	○	○	○	○	○	○	○	○	○
■ 40 Taper 9,000 / 12,000 min ⁻¹ SKF NE spindle	●	●	×	×	×	×	×	×	×
■ 40 Taper 9,000 / 12,000 min ⁻¹ SKF NB spindle	×	×	●	●	×	×	×	×	×
■ 40 Taper 15,000 min ⁻¹ SKF NEC spindle	×	×	×	×	●	×	×	×	×
■ 40 Taper 15,000 min ⁻¹ SKF NC spindle	×	×	×	×	×	●	×	×	×
■ 50 Taper SKF NB 50T spindle gear box	×	×	×	×	×	×	●	●	●
■ BBT	●	●	●	●	●	●	●	●	●
■ 40 Taper 24 position tool magazine	●	●			●	×	×	×	×
■ 40 Taper 32 position tool magazine	×	×			○	○	×	×	×
■ 40 Taper 48 position tool magazine	×	×	○	○	○	○	×	×	×
■ 40 Taper 60 position tool magazine	×	×	○	○	○	○	×	×	×
■ 50 Taper 30 position tool magazine	×	×	×	×	×	×	●	●	●
■ Tooling system - BT	○	○	○	○	○	○	○	○	○
- ISO	●	●	●	●	●	●	●	●	●
■ Linear encoder absolute 0.1 μm	○	○	○	○	○	○	○	○	○
■ Remote manual pulse generator	●	●	●	●	●	●	●	●	●
■ Spindle ECO cooler	●	●	×	×	×	×	×	×	×
■ Spindle oil chiller (6,000 Kcal)	○	○	●	●	●	●	●	●	●
■ 4 th axis preparation	●	●	●	●	●	●	●	●	●
■ Coolant system	●	●	●	●	●	●	●	●	●
■ 20 bar through spindle coolant (GRUNFOS)	●	●	●	●	●	●	●	●	●
■ 50 bar through spindle coolant (GRUNFOS)	○	○	○	○	○	○	○	○	○
■ Coolant wash gun	●	●	●	●	●	●	●	●	●
■ Chip conveyor	●	●	●	●	●	●	●	●	●
■ Cutter air blast	●	●	●	●	●	●	●	●	●
■ Mist filter	○	○	○	○	○	○	○	○	○
■ Probe	○	○	○	○	○	○	○	○	○
■ Documentation & hand tools shelf	●	●	●	●	●	●	●	●	●
■ Foundation bolts & blocks	●	●	●	●	●	●	●	●	●
■ Tools with tool box	●	●	●	●	●	●	●	●	●
■ Work light	●	●	●	●	●	●	●	●	●
■ Machine status light	●	●	●	●	●	●	●	●	●
■ CE & EMC	●	●	●	●	●	●	●	●	●



HEIDENHAIN iTNC 530

Models		
Value	Performance	50 Taper
MV204CV / 9	MV204CP / 10	MV205CP / 6
MV204CV / 12	MV204CP / 15	MV205CP / 7.5
		MV205CP / 10
	MV204CPL / 10	MV205CPL / 6
	MV204CPL / 15	MV205CPL / 7.5
		MV205CPL / 10

Technical Data	MV204CV Value		MV204CP / MV204CPL Performance		MV205CP / MV205CPL 50 Taper		
	/9	/12	/10	/15	/6	/7.5	/10
Work range							
Table size (mm)	1,400 x 700		1,400 x 700 / 1,700 x 700				
Travel	1,200		1,200 / 1,500				
X (mm)			700				
Y (mm)			610				
Z (mm)							
Spindle nose to table surface (mm)	150 ~ 760		150 ~ 760		190 ~ 800		
Table load capacity (kg)	1,000		1,800 / 2,000				
Feed drive							
Feed force	X (N)		9,268		11,310		
	Y (N)		9,268		11,310		
	Z (N)		13,666		19,899		
Rapid movement	X / Y / Z (mm/min.)		36				
Acceleration	X / Y / Z (m/s ²)		4 / 3 / 4		5 / 5 / 5 4 / 4 / 5		
Dia. & pitch of the ball screw	Ø45 / P = 12 / 12 / 12						
Position accuracy	0.015 / 0.008 (Linear encoder) – ISO 230-2						
In X / Y / Z (mm)	0.008 / 0.004 (Linear encoder) – JIS						
Main spindle	40 Taper				50 Taper		
Spindle model	ISO 40 or BBT 40				ISO 50 or BBT 50		
Spindle taper							
Max. spindle speed	9,000	12,000	10,000	15,000	6,000	7,500	10,000
Spindle base speed	1,125	1,500	1,500	1,580	300	375	500
Spindle output kW (S6-40%)	17 ⁽¹⁾		30	30	30	30	30
Spindle output torque Nm (S6-40%)	144 ⁽¹⁾	108 ⁽¹⁾	191	183	955	764	573
Spindle transmission	Belt		Belt	Coupling	Gear box		
Spindle diameter (mm)	Ø70				Ø100		
Tool changer	Random						
Tool selection							
Magazine positions	STD	24	24 / 32		30		
	OPT	-	32 / 48 / 60		-		
Max. tool diameter (mm)	80		80 (75 mm in 32 / 48 / 60 magazine)		125		
<w/o adjacent tool (mm)			125		200		
Max. tool length (mm)			300		350		
Max. tool weight (kg)			7		15		
CTC time – ISO 10791-9 (sec.)	6		5.5		9		

Note: ⁽¹⁾ S6-25%

Main spindle (SKF made)

40 Taper	Belt spindle	- 9,000 min ⁻¹
		- 10,000 min ⁻¹
		- 12,000 min ⁻¹
	Coupling spindle	- 15,000 min ⁻¹
50 Taper	Gear box	- 6,000 min ⁻¹
		- 7,500 min ⁻¹
		- 10,000 min ⁻¹

Control

HEIDENHAIN iTNC 530

Black ● ○ × = Both on MV204C & MV204CL

Blue ● ○ × = MV204C & MV205C

Red ● ○ × = MV204CL & MV205CL

● = Standard

○ = Option

× / A

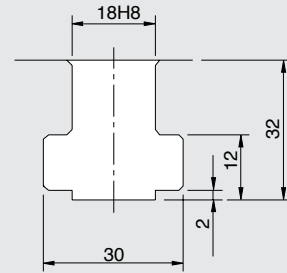
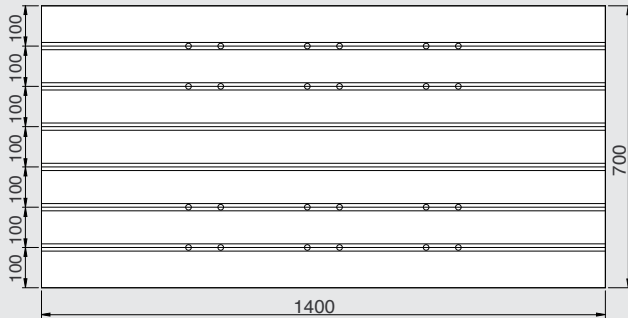
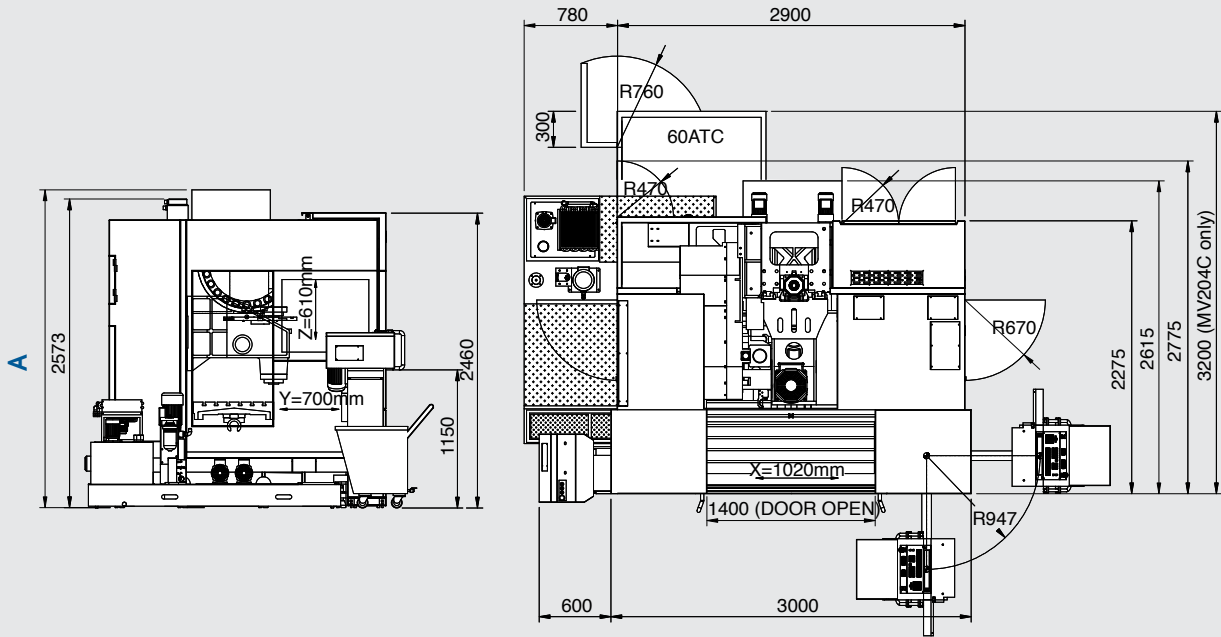
Technical Data	MV204CV Value		MV204CP / MV204CPL Performance		MV205CP / MV205CPL 50 Taper		
	/9	/12	/10	/15	/6	/7.5	/10
Coolant system							
Coolant tank capacity (Liter)	600						
Pump capacity							
- Nozzle coolant	60 L / min, 4 bar						
- Through spindle coolant	25 L / min, 20 bar						
- Wash down	60 L / min, 4 bar						
Machine size							
Height (mm)	2,880		2,880 3,030		3,300 3,370		
Floor space W x D (mm) 24 / 32 ATC	2,900 x 2,635		3,675 x 2,635 / 4,475 x 2,635		-		
48 / 30 ATC	-				3,675 x 3,250 / 4,475 x 3,250		
Weight (kg)	8,500		8,500 - 9,100 / 9,500 - 10,100		9,000 - 9,600 / 10,000 - 10,600		
Connections							
Main power	220 V / 60 Hz or 400 V / 50 Hz						
Power consumption (KVA)	25		35	35		40	

Standard / Option Accessories :

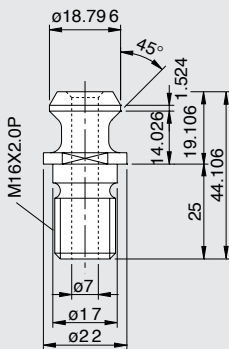
	MV204CV		MV204CP / MV204CPL		MV205CP / MV205CPL		
	/9	/12	/10	/15	/6	/7.5	/10
■ HEIDENHAIN iTNC 530	●	●	●	●	●	●	●
■ HEIDENHAIN Option 2	○	○	○	○	○	○	○
■ 40 Taper 9,000 / 12,000 min ⁻¹ SKF NE spindle	●	●	×	×	×	×	×
■ 40 Taper 10,000 min ⁻¹ SKF NB spindle	×	×	●	×	×	×	×
■ 40 Taper 15,000 min ⁻¹ SKF SNE/15 spindle	×	×	×	●	×	×	×
■ 50 Taper SKF NB 50T spindle gear box	×	×	×	×	●	●	●
■ BBT	●	●	●	●	●	●	●
■ 40 Taper 24 position tool magazine	●	●	×	●	×	×	×
■ 40 Taper 32 position tool magazine	×	×	○	●	×	×	×
■ 40 Taper 48 position tool magazine	×	×	○	○	×	×	×
■ 40 Taper 60 position tool magazine	×	×	○	○	×	×	×
■ 50 Taper 30 position tool magazine	×	×	×	×	●	●	●
■ Tooling system - BT	○	○	○	○	○	○	○
- ISO	●	●	●	●	●	●	●
■ Linear encoder absolute 0.1 μm	○	○	○	○	○	○	○
■ Remote manual pulse generator	●	●	●	●	●	●	●
■ Spindle ECO cooler	●	●	×	×	×	×	×
■ Spindle oil chiller (6,000 Kcal)	○	○	●	●	●	●	●
■ 4 th axis preparation	●	●	●	●	●	●	●
■ Coolant system	●	●	●	●	●	●	●
■ 20 bar through spindle coolant (GRUNFOS)	●	●	●	●	●	●	●
■ 50 bar through spindle coolant (GRUNFOS)	○	○	○	○	○	○	○
■ Coolant wash gun	●	●	●	●	●	●	●
■ Chip conveyor	●	●	●	●	●	●	●
■ Cutter air blast	●	●	●	●	●	●	●
■ Mist filter	○	○	○	○	○	○	○
■ Probe	○	○	○	○	○	○	○
■ Documentation & hand tools shelf	●	●	●	●	●	●	●
■ Foundation bolts & blocks	●	●	●	●	●	●	●
■ Tools with tool box	●	●	●	●	●	●	●
■ Work light	●	●	●	●	●	●	●
■ Machine status light	●	●	●	●	●	●	●
■ CE & EMC	●	●	●	●	●	●	●

MV204C & MV205C Series

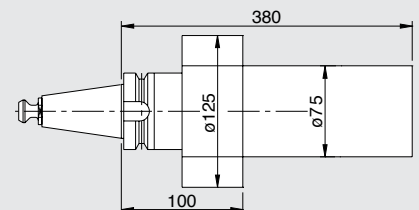
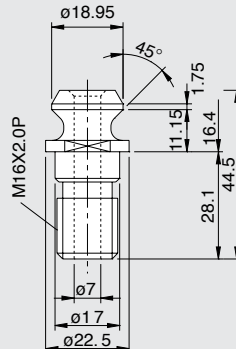
A	V	9/12	2,880
		10	
		15	
	P	15D	2,880
		6	
		7.5	
		10	3,300



BT 40 (QUASER SUPPLY)

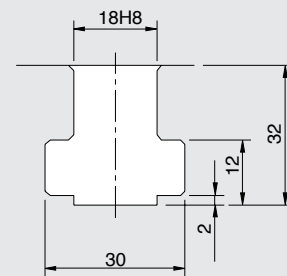
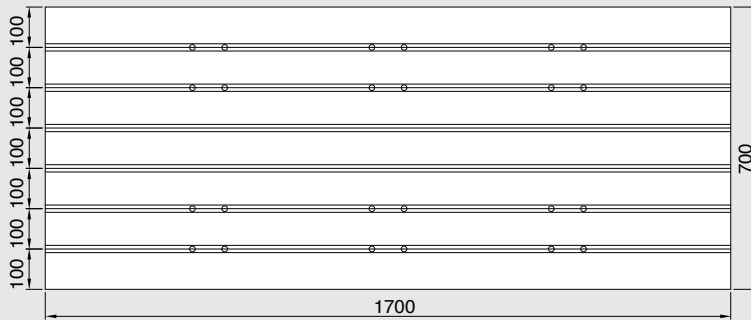
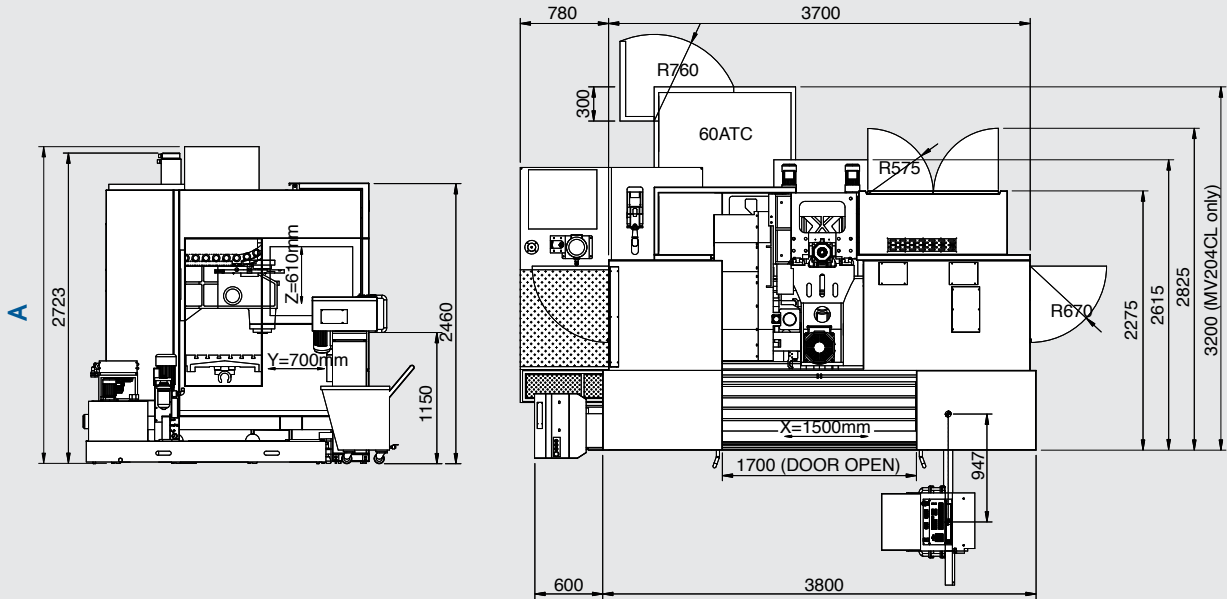


ISO 40

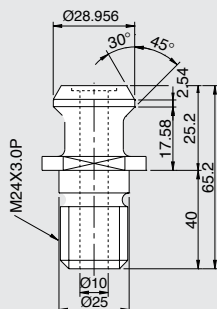


MV204CL & MV205CL Series

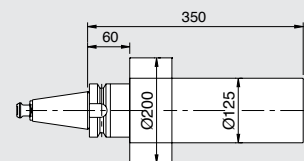
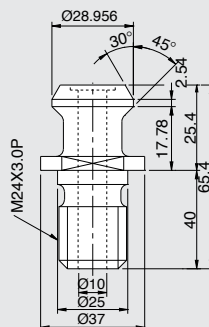
A	PL	10	3,030
		15	3,370
		15D	
		6	
		7.5	
10			



BT 50 (QUASER SUPPLY)



ISO 50



BUILT - IN QUALITY :

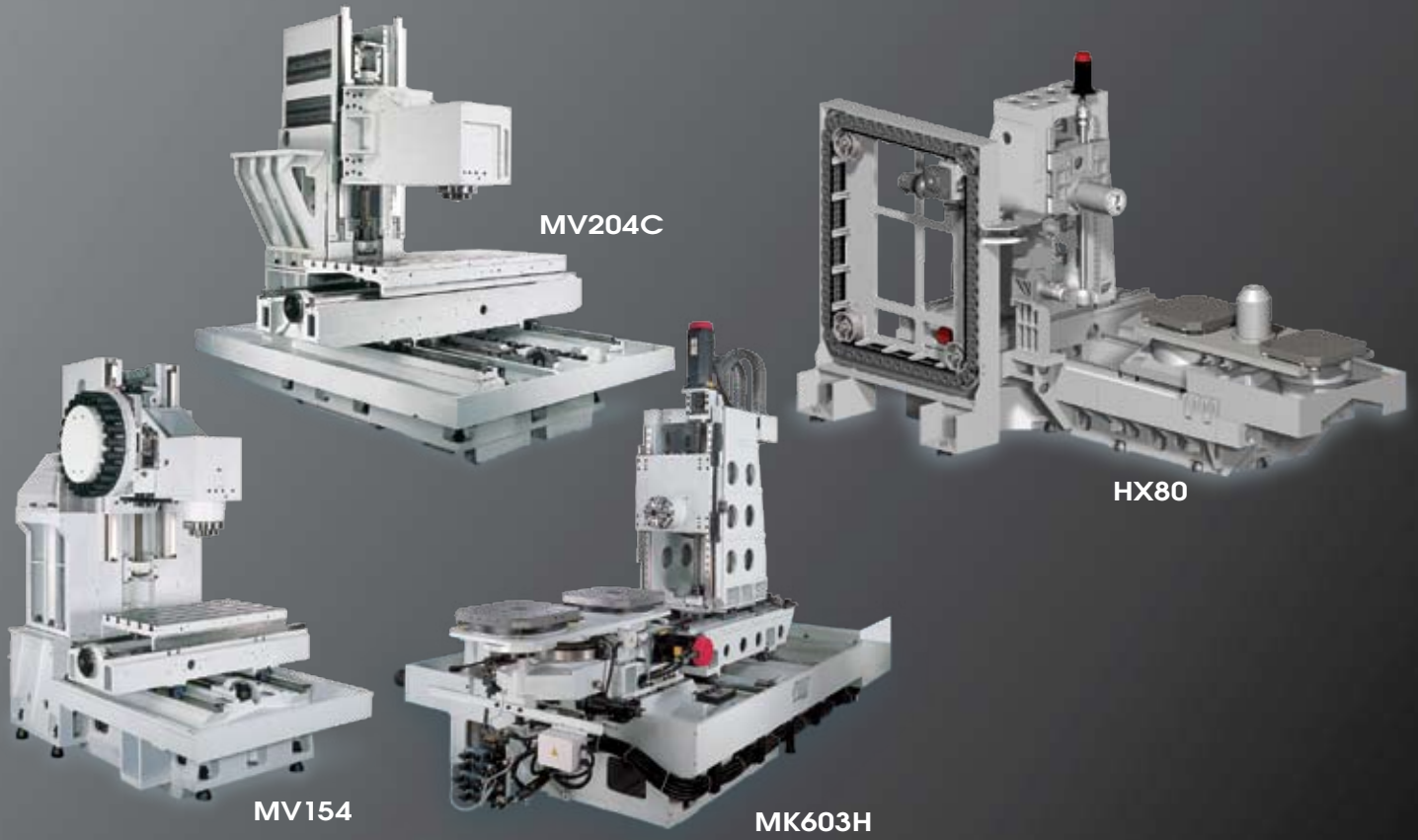
■ Dual process design



■ Through craftsmanship & meticulous inspection



- With rigid cast iron frame & high performance SKF spindle



- Final 24 hours wet test



QUASER

we cut faster

QUASER MACHINE TOOLS, INC.

No. 28-1, Ching Chuan Rd., Chung Yi Village,

Ta Ya Hsiang, Taichung Hsien (428), Taiwan

Tel : +886-4-25673606

Fax : +886-4-25687078

E-mail : edward@qmt.com.tw

Web: www.quaser.com